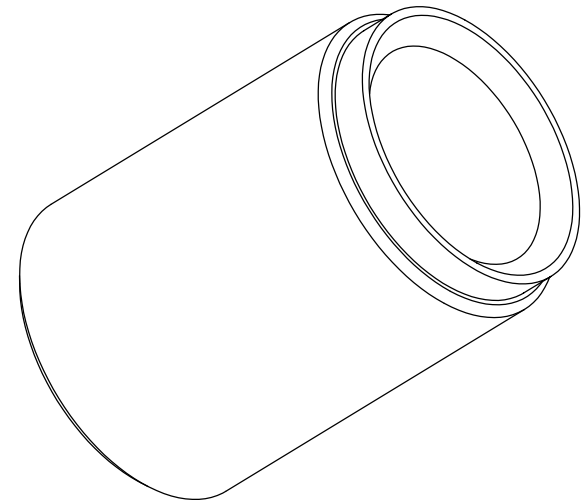
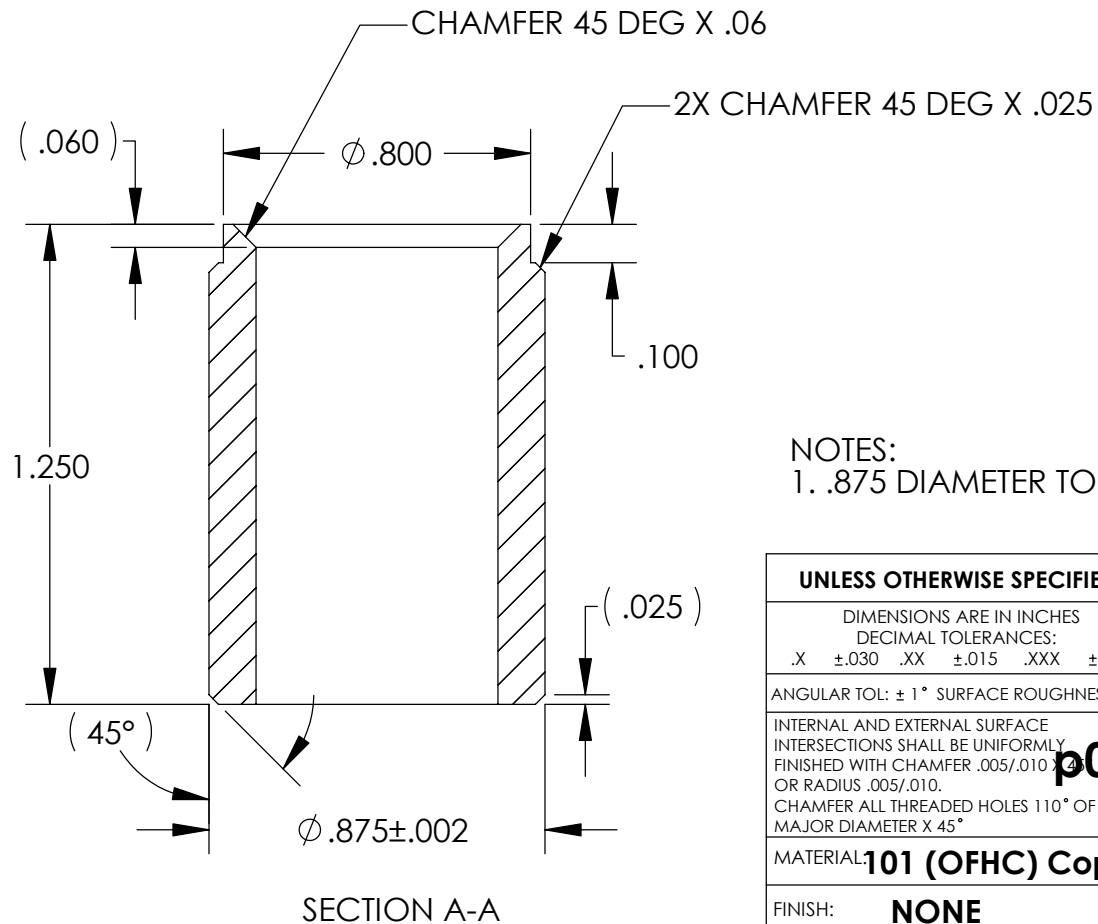
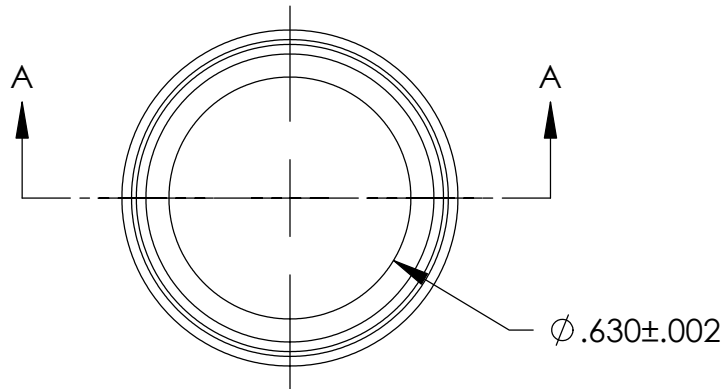


REVISIONS		
REV	DESCRIPTION	DATE
B	OD WAS .870	6/4/2003
C	OD WAS .990	6/27/2003



NOTES:
1. .875 DIAMETER TO BE CLOSE SLIP WITH ID OF P/N -071.

UNLESS OTHERWISE SPECIFIED:		<div>High Precision Devices</div> <div>1668 Valtrec Lane, Suite C, Boulder, Colorado 80301 Phone: (303) 447-2558 Fax: (303) 447-2548 Web Site: www.hpd-online.com</div>				
DIMENSIONS ARE IN INCHES DECIMAL TOLERANCES: .X ±.030 .XX ±.015 .XXX ±.005						
ANGULAR TOL: ± 1° SURFACE ROUGHNESS:√63						
INTERNAL AND EXTERNAL SURFACE INTERSECTIONS SHALL BE UNIFORMLY FINISHED WITH CHAMFER .005/.010 X 45° OR RADIUS .005/.010. CHAMFER ALL THREADED HOLES 110° OF MAJOR DIAMETER X 45°		TITLE: p02101-049 Braze Adapter, He inter				
		CONFIGURATION: 00-Default				
MATERIAL: 101 (OFHC) Copper		SIZE: A	QTY PER ASSM: 1	SCALE: 2:1	SHEET 1 OF 1	REV C
FINISH: NONE			DATE: 5/17/2004	DRAWN BY: C. Danaher		